

FOR SALE

Timberweld
Manufacturing Facility
Glue Laminated Beams
Columbus, Montana



835 Clough Avenue

Columbus, Montana 59019

Property Details

- **MAIN MANUFACTURING BUILDING**
 - Approximately 45,503 SF
 - 463 Feet Long, 90 Feet Wide
 - Concrete Floor
 - Overhead Fire Suppression System (City Water)
 - Overhead Hoists
 - Adjustable Jig Bending System
 - Rail Spur (MRL Lease)
 - Material Sheds on MRL Leased Land
 - 12–14 Foot Ceiling Height
 - Truck Scale
 - DISA–Bag House Dust Collection System with external hopper
- **OFFICE**
 - 2,128 SF Main Floor Area
 - 697 SF of Record Storage
- **Extensive Plant Fixed Machine List Available**
- **Extensive Plant Portable Tools List Available**
- **FOR SALE: \$1,400,000**



Glue Laminated Beams

- **REGIONAL AMENITIES**
 - Columbus Airport
 - I-90 Interstate
 - Billings International Airport
 - Population of Billings, MT:
Approximately 125,000

For more information:

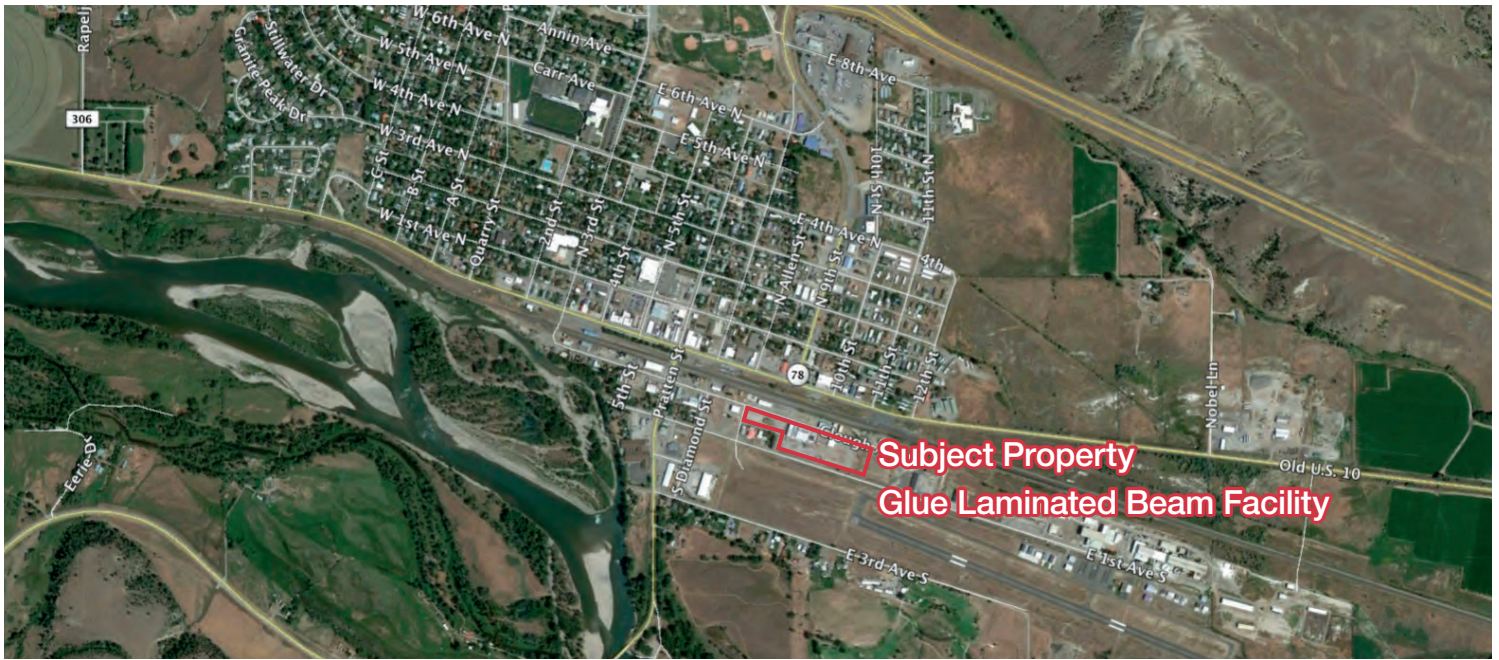
Ken Kunkel – 406 591 1234

kkunkel@naibusinessproperties.com

NO WARRANTY OR REPRESENTATION, EXPRESS OR IMPLIED, IS MADE AS TO THE ACCURACY OF THE INFORMATION CONTAINED HEREIN, AND THE SAME IS SUBMITTED SUBJECT TO ERRORS, OMISSIONS, CHANGE OF PRICE, RENTAL OR OTHER CONDITIONS, PRIOR SALE, LEASE OR FINANCING, OR WITHDRAWAL WITHOUT NOTICE, AND OF ANY SPECIAL LISTING CONDITIONS IMPOSED BY OUR PRINCIPALS NO WARRANTIES OR REPRESENTATIONS ARE MADE AS TO THE CONDITION OF THE PROPERTY OR ANY HAZARDS CONTAINED THEREIN ARE ANY TO BE IMPLIED.

3312 4th Avenue North
Billings, Montana 59101
+1 406 256 5000

naibusinessproperties.com



**Subject Property
Glue Laminated Beam Facility**



DISA – Bag House Dust Collection System



Adjustable Jig Bending System – Timber Floor



Machine Shop – Milling, Lath, Welding



Beam Fabrication Line, Fezer



Overhead Hoists



Material Sheds on Railroad Leased Land